



Designer Manufacturer

LOGINOX LCD

Stainless steel mobile protective enclosure for complete IT workstation

Characteristics :

- Mechanically welded assembly ;
- Stainless steel structure to which additional shelves may be added ;

Upper section :

- Stainless steel "Rollbar" in sintered 30 mm tubing which is attached the LCD PROTECTION, also compatible with a PISTOL GRIP MOUNT ;
- Worktop in stainless steel plate for a mouse and keyboard (integrated mouse mat) ;
- LCD PROTECTION IP 65: protection for flat screens Protects LCD monitors from dust, temperature changes, splashes, the cold, etc...

Lower section :

- Encased by composite panels, 10 mm thick, compatible with WiFi and RF transmissions ;
- Two doors : one on the front, the other to the rear for access to the computer equipment within ;
- Handling : two side-mounted handles ;
- Sliding shelf - dimensions W 515 x D 700 mm (dimensions of shelf when extended : 450 mm);
- Fixed intermediate shelf ;
- Ambient air & heat extraction and filtration system ;
- Connection : the enclosure is delivered with :
 - A strip of five 220V 10/16A electrical sockets with its own illuminated master switch.
 - Two standard cable glands (7 to 13 mm) to allow cables to enter the cabinet.

- Ground contact : 4 wheels (100 mm diameter), two of which pivot and can be locked, two of which are fixed.

Advantages :

- Ergonomy
- Physically protects computer equipment
- Fully modular internal structure

Available in a steel version : LOGIRACK LCD



LOGINOX LCD DIMENSIONS in mm :

External	W 860 x D 760 x H 1020
Internal	W 780 x D 720 x H 800

LCD PROTECTION IP 65 DIMENSIONS in mm :

W 500 x D 100 x H 500
W 480 x D 84 x H 480



LOGINOX LCD with computer hardware



LOGINOX LCD with TAV L 24 hatch



Fixed and mobile workstations

DESCRIPTION OF OPTIONS ...

*The mobile protection solution in stainless steel
for all your computer workstation*



L 12 Slot

WATERLIGHT LABEL SLOT Option

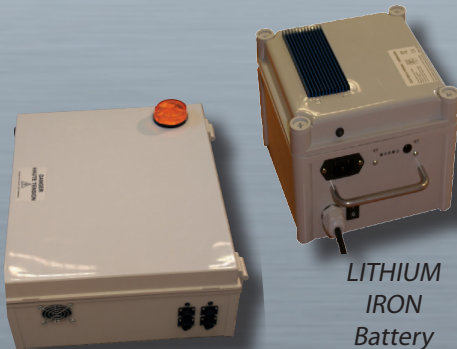
- Inspection port in unbreakable polycarbonate. Available in two sizes :
 - L 12 : W 220 x H 100 en mm ;
 - L 24 : W 220 x H 190 en mm.



PISTOL GRIP MOUNT

PISTOL GRIP MOUNT support

- Attached to the sintered tube "rollbar" ;
- Or the worktop ;
- Compatible with standard pistol grips.



AGM Battery

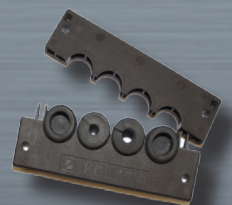
LITHIUM
IRON
Battery

ENERGY CABINET option

- With AGM (acid-free) and LITHIUM (Li) IRON (Fe) Batteries;
- Single, perfectly insulated and ventilated housing;
- Houses batteries and all peripheral material (converters, chargers, etc.);
- Provides a supply for multiple consumer units (PC, printer, terminal, screen, etc.) thanks to its multi-voltage outputs (5 to 24V DC and/or 230V AC).

Additional options:

- KDL: cable gland system;
- Monitor mounting plate;
- Warning lights and remote voltage display;
- Additional fixed or sliding shelf;
- Label tray;
- Internal layout to measure;
- etc.



KDL